

Weld Immune Inductive Sensors ... for harsh applications in welding areas



more added value

Inductive Sensors

For harsh applications in welding areas

BALLUFF

sensors worldwide

more added value

- Long range for more function reserves
- Rugged and reliable
- Weld field immune quick-locking clamp with clamping lever for simplest installation



Switching distance ■ ■ ■



Switching distance ■ ■ ■



Switching distance ■ ■ ■



| | | | |
|--|-------------------------------------|-------------------------|-------------------------|
| Housing size | M12x1 | M18x1 | M30x1.5 |
| Mounting | flush | flush | flush |
| Rated operating distance s_n | 3 mm | 7 mm | 13 mm |
| Assured operating distance s_a | 0...2.4 mm | 0...5.6 mm | 0...10.5 mm |
| PNP Normally open | Ordering code BES02K1 | BES02KC | BES02KL |
| Part number | BES M12MI-PSC30B-S04G-W | BES M18MI-PSC70B-S04G-W | BES M30MI-PSC13B-S04G-W |
| Rated operating voltage U_o | 24 V DC | 24 V DC | 24 V DC |
| Supply voltage U_B | 10...30 V DC | 10...30 V DC | 10...30 V DC |
| Voltage drop U_d at I_o | ≤ 2.5 V | ≤ 2.5 V | ≤ 2.5 V |
| Rated operating current I_o | 200 mA | 200 mA | 200 mA |
| No-load current I_o damped | ≤ 9.0 mA | ≤ 9.0 mA | ≤ 12.0 mA |
| Reverse polarity/short circuit protected | yes | yes | yes |
| Ambient temperature range T_a | +5...+60 °C | +5...+60 °C | +5...+60 °C |
| Switching frequency f | 300 Hz | 50 Hz | 30 Hz |

Magnetic field immune

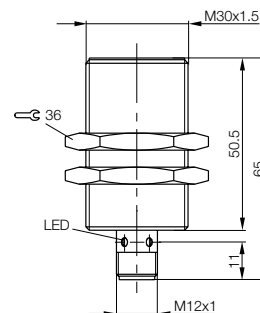
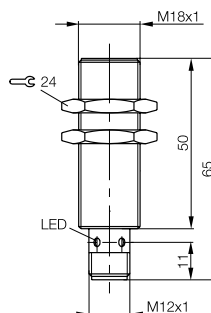
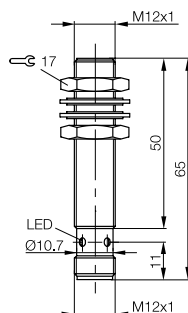
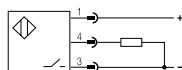
Insensitive to magnetic fields resulting from electrical weld currents up to 25 kA (at a distance of approx. 5 cm from the energetic conductor).

Weld splatter resistant

Resistant to metal splatter and combustion remains caused by welding.

All models::

Enclosure rating IP 67, housing material CuZn (brass), PTFE (Teflon) finish coated, sensing face material LCP (Vectra) and PTFE (Teflon).



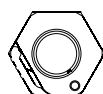
Recommended clamps



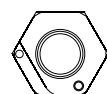
| | | | |
|--------------------------|-------------------|-------------------|-------------------|
| Clamp with positive stop | M16x1.0x45.0 | M24x1.5x58.0 | M36x1.5x60.0 |
| Ordering code | BAM00EC | BAM00H6 | BAM00JJ |
| Part number | BES 12,0-KH-9LT/W | BES 18,0-KH-9ST/W | BES 30,0-KH-9ST/W |

For all clamps:

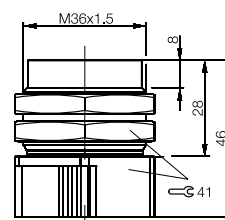
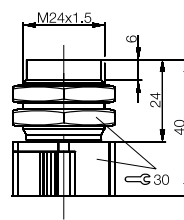
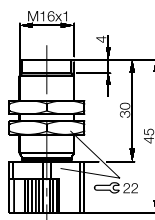
Housing and cover nut material CuSn (bronze), surface finish PTFE (Teflon), positive stop and latch material LCP (Vectra) and PTFE (Teflon).



Closed



Open



Balluff GmbH
Schurwaldstrasse 9
73765 Neuhausen a.d.F.
Germany
Phone +49 7158 173-0
Fax +49 7158 5010
balluff@balluff.de
www.balluff.com